



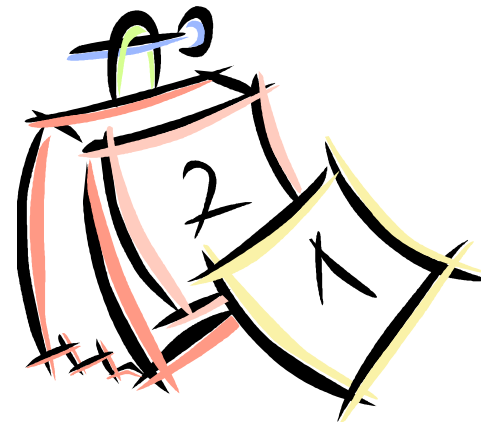
**Plainview-Old Bethpage CSD
Community Forum
K-4 Plan
May 26, 2015**

Agenda

- **Introduction: BOE President Gary Bettan**
- **Background and Rationale:**
 - **Superintendent & Assistant Superintendents**
- **Building Plans: Principals**
- **Acknowledgements: Superintendent**
- **Questions to the Board of Education from the Community**

SRC Dates of Meetings

- **Committee charged at the Board of Education Meeting on October 15, 2013 to convene.**
- **Committee Meeting Dates:**
 - **November 5, 2013**
 - **November 19, 2013**
 - **December 19, 2013**
 - **February 11, 2014**
 - **February 24, 2014**
 - **May 29, 2014**
 - **June 10, 2014**
 - **September 15, 2014**
 - **September 30, 2014**
 - **November 13, 2014**
 - **December 2, 2014**
 - **January 29, 2015**



SRC Committee

PTA

- **Jennifer Novis (Pky/MMS)**
- **Kathy Rea(SEPTA/HS/POBMS)**
- **Kim Luxenberg (SR/POBMS)**
- **Donna Lupia (MMS/OB)**
- **Paula Barsky (MMS/HS/SEPTA)**
- **Diane Collins (MMS/HS)**
- ***Shari Corn (PAS/POBMS)***

Central Office

- **Jill Gierasch**
- **Lorna Lewis**
- **Nadine Eiring**

* Attended first four meetings

PCT*

- **Judi Alexanderson**
- **Nina Melzer**
- **Morty Rosenfeld**
- **Ed Hanlon**
- **Vicki Ahlsen**

ASDA

- **Dolores Binstock**
– *Paulette Miller*
- **Laurie Lynn**
- **Fran Leiboff/*Karen Heitner***
- **Alison Clark**
- **John McNamara**
- **D. Mittleman/*Chris Donarummo***
- **Greg Scesney**

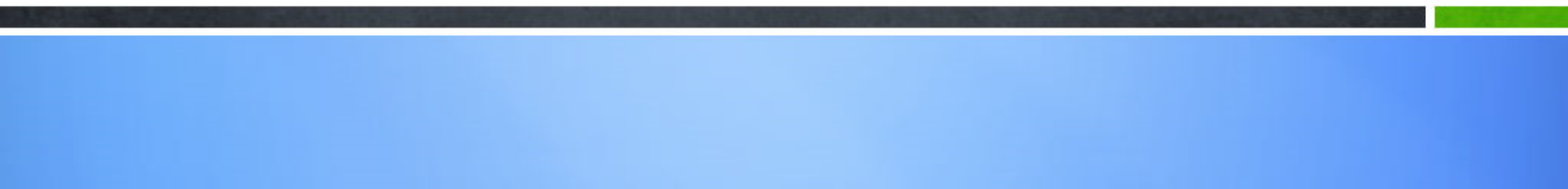
Where We Began...

- **Concern about the inequities between the Middle Schools**
- **Conflict with Remediation, Music and Extra-Curricular Activities**
- **Conflict resolved with 10th period day at Mattlin in 2014-15; however, the day became longer than POBMS**





11 Proposals Considered by SRC



New Start and End Times at ALL POB Elementary & Middle Schools

2015-16

THE NEW START AND END TIMES

K-Center: 9:35 a.m. – 3:35 p.m.

Elementary Schools: 9:10 a.m. – 3:10 p.m.

Middle Schools: 8:33 a.m. – 2:43 p.m.



Waking Up With K-STEAM

- **Enrichment program for all enrolled students**

8:20 - 9:20 a.m.

- **Arts & Crafts - Karate**
- **Computers**
- **Challenge Island**
- **Mad Science**



Proposal #6

- Consider closing the K-Center to bring the two middle schools at the same time, with the same programs
- Cost savings anticipated through administrative restructuring
- POBMS and Mattlin on the same schedule and K-4 schools on the same schedule

Considerations & Issues:

- The school times have been modified to achieve this change to minimize the cost to the district. The high school bell schedule is not affected.
- Is there room in elementary schools and what would be the cost of reconfiguring?
- Early day for Zero Period is a concern

Transportation: \$187,000

Staffing: (\$675,000)

Total: (\$488,000)

	K-Center Current	K-Center Proposed Home School	Mattlin Current	Mattlin Proposed	POB MS Current	POB MS Proposed	Elementary Schools Current	Elementary Schools Proposed	POBJFK High School
Start	8:45 am	9:08 am	8:00 am	8:28 am	8:43 am	8:28 am	9:15 am	9:08 am	7:28 am
End	2:30 pm	3:08 pm	2:10 pm	2:38 pm	2:53 pm	2:38 pm	3:15 pm	3:08 pm	1:37 pm
9th Period			2:55 pm	3:23 pm*	3:38 pm	3:23 pm			1:41 - 2:23 pm
10th Period									2:27 - 3:09 pm
Zero Period			n/a	7:35 am	7:52 am	7:35 am			

*Late buses will arrive 7 minutes after the period ends between 3:30-3:35 pm after the completion of the elementary school routes.

Rationale for Proposal 6

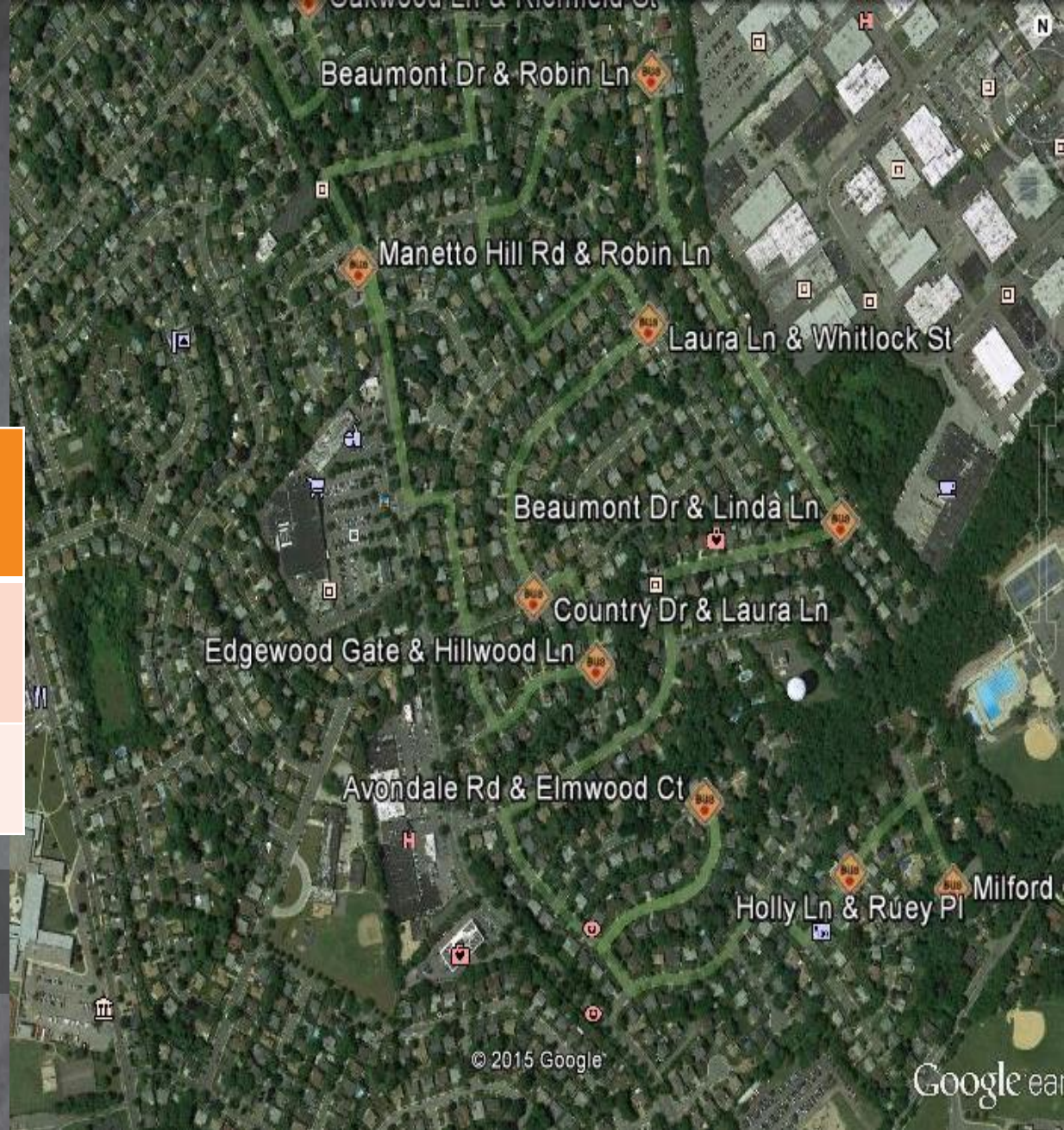
K-4 Elementary Schools

- **One less transition for elementary age students.**
- **Greater consistency in service and service providers for students with instructional needs.**
 - **The learning curve for targeting instructional needs is lessened when students are delivered services from the same provider over their transition from K to Grade 1 and thereafter.**
- **Improved articulation with teachers in K and Grades 1-4.**
- **Students and parents form more meaningful connections with their school, friends and staff during 5 years vs. 1 year.**
- **A wider inclusion of grades within a school creates more opportunities for younger children to interact with older peers, who can model the behavioral and academic expectations of later grades (Epstein, 1990).**
- **Significantly reduces bus transportation time.**
- **Enrollment decline allows schools to absorb the K students.**
- **Elementary parents have one start and end time to the day for 5 years, creating more opportunities for family time.**
- **Solves the Middle School Inequities and may allow resources to be deployed for a 9-period day at the High School.**



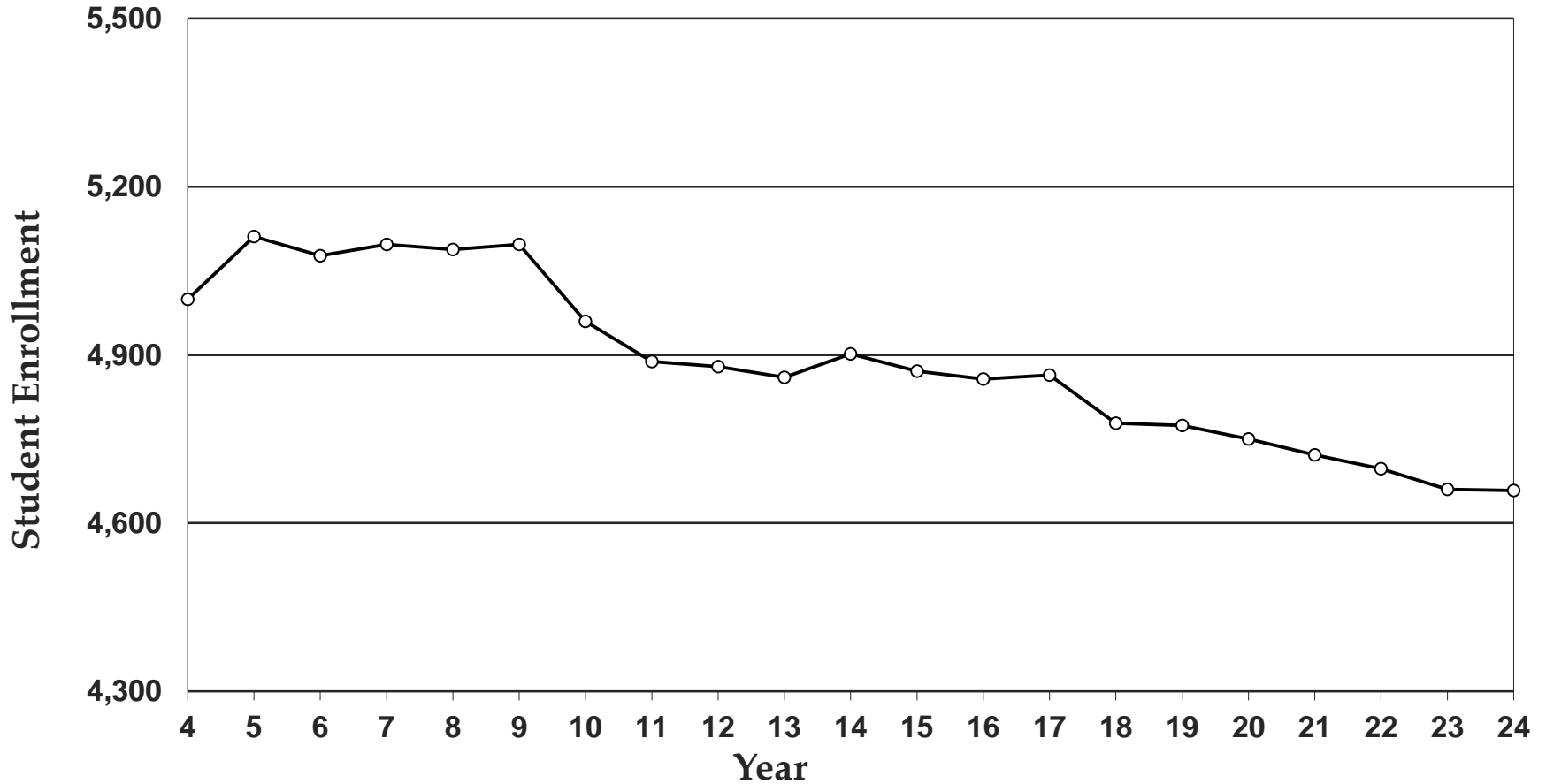
PARKWAY AREA

	Pick Up	Arrival Time	Length of Trip
K Ctr	8:45	9:25	40 minutes
PK	8:35	9:00	25 minutes



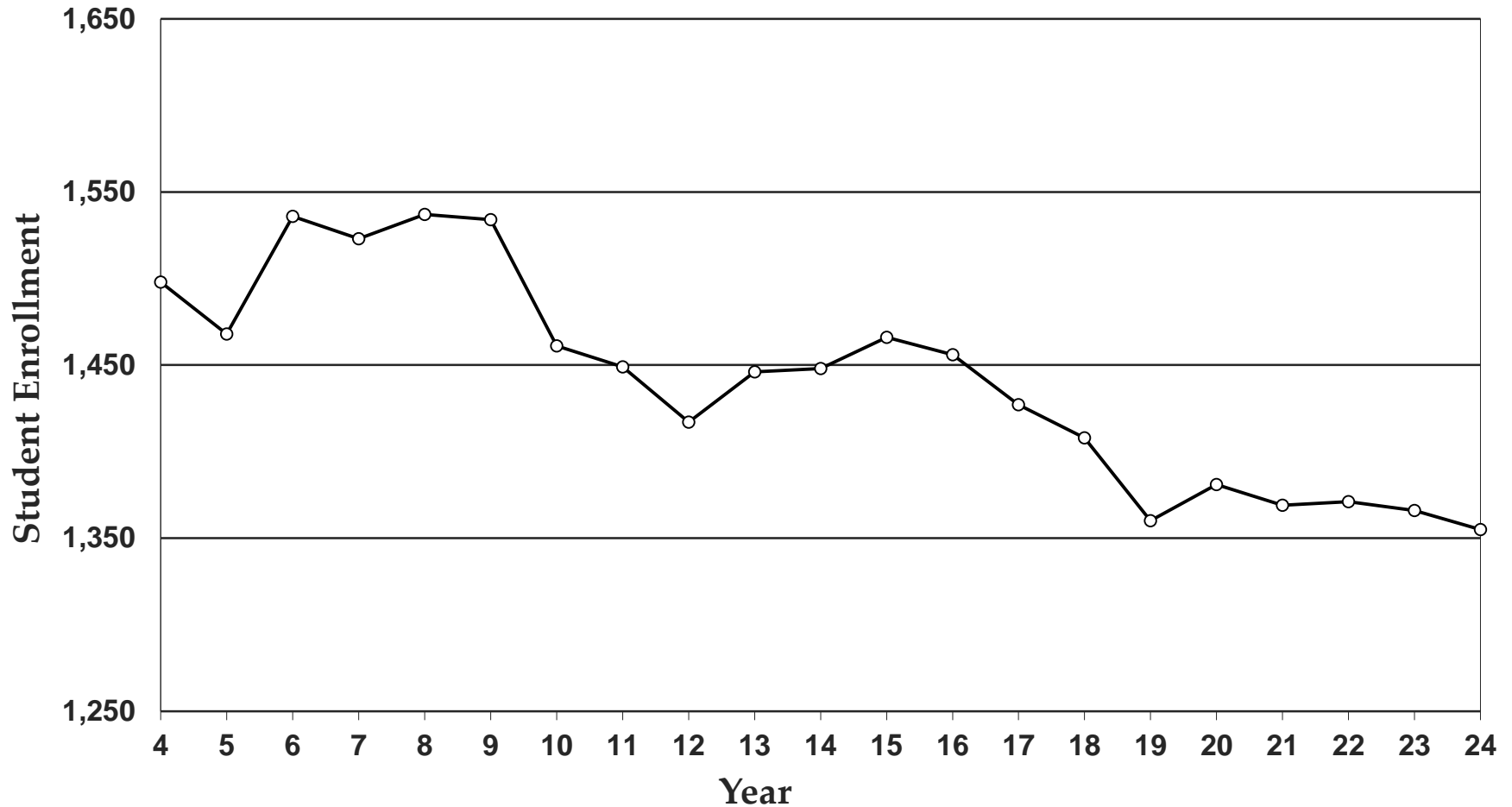
Plainview-Old Bethpage Central School District

Enrollment: Grades K - 12

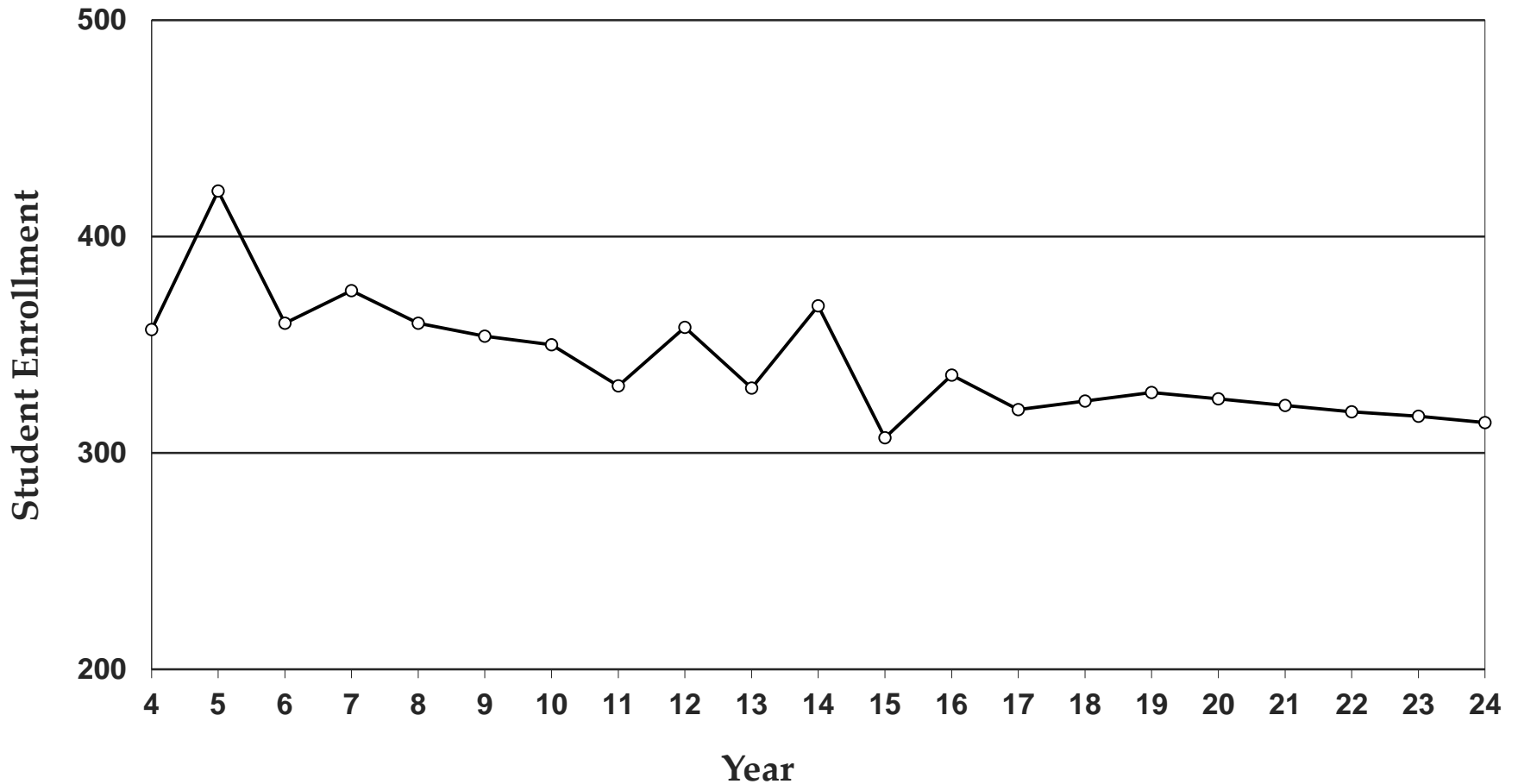


Plainview-Old Bethpage Central School District

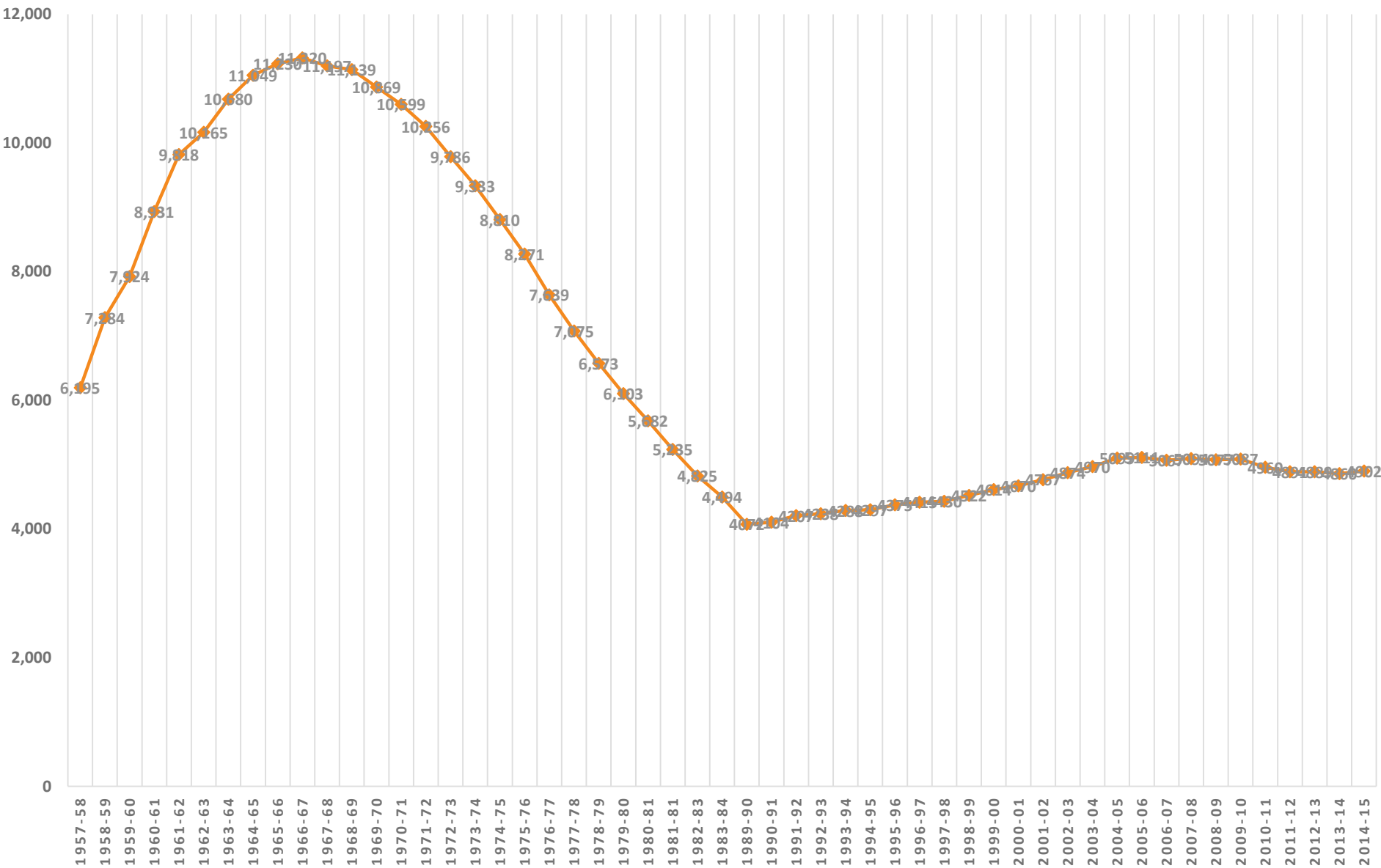
Enrollment: Grades 1 - 4



Plainview-Old Bethpage Central School District Kindergarten Enrollment



DISTRICT TOTAL ENROLLMENT 1957-2015




K-4* Enrollment 1995 vs. 2016-17

Parkway		Stratford Road		Old Bethpage	
1995-96	2016-17	1995-96	2016-17	1995-96	2016-17
520	434	688	508	494	417

***Pasadena was not open for POB students in 1995-96. The Pasadena enrollment would be 438 students K-4 in 2016-17. Pasadena and Parkway have the same building footprint .**

Elementary Capacity Report (Oct. 2014)

School	Available Rooms	Cost Associated	Projected K Sections 2015-16	Projected K Sections 2016-17
Pasadena	Room 2 (ESL) Room 19 (Chinese) Room 14 (Reading) Room 23 (A/B)	\$5000	4	4
Parkway	Room 21 (Chinese) Room 11 (PPS Conf.) Room 14 (Math) Room 12 (RR)	\$35,000	4	4
Stratford Road	Use of Current K classes on the 2nd Floor	\$0	4	4
Old Bethpage	Room 2 Room 7 (AIS) Room 1 Room 5	\$10,000	3	3



Class Sizes will Remain at their Current Levels

Elementary BOE Guidelines

Primary Grades K-2	18-24
Elementary Grades 3-4	20-28
Intermediate Grades 5-6	23-28

Historical Data

(Year of highest enrollment shown)

<u>Elementary BOE Guidelines</u>	
Primary Grades K-2	18-24
Elementary Grades 3-4	20-28
Intermediate Grades 5-6	23-28

Grade	Old Bethpage		Parkway		Pasadena		Stratford Road	
	2007/08	2015/16	2006/07	2015/16	2004/05	2015/16	2008/09	2015/16
# Rooms	23	19	21	20	22	21	25	21
K	5	4	4	4	5	4	5	4
1	4	4	5	4	4	5	6	5
2	5	4	4	4	5	4	5	4
3	4	4	4	4	4	4	5	5
4	5	3	4	4	4	4	4	3
Enrollment	500	389*	425	439*	485	460*	553	460*

***Total includes projected kindergarten enrollment**



Potential Cost Reductions From Closing the K-Center

Salaries & Benefits	Cost
1.0 FTE Principal	\$195,890
.5 FTE Assistant Principal	\$75,894
1.0 FTE Nurse	\$82,549
1.0 FTE Librarian	\$97,775
2.0 FTE Clericals	<u>\$162,535</u>
Total Salary & Benefits	\$614,643
Transportation	\$0
Total Savings from Closing the Kindergarten Center	\$614,643

Personnel Gained For Grades 1 - 12

Salaries & Benefits	Cost
2.0 FTE Assistant Principal	\$338,986
.5 FTE Librarian HS	\$48,887
.5 FTE K-12 Lead Librarian	\$48,887
2.0 FTE Clericals	<u>\$162,535</u>
Total Salaries & Benefits	\$599,295

Potential Costs Associated with Relocating Kindergarten Classes to Their Home Schools

Construction to Existing Classrooms to Make Them Kindergarten Ready for 2016-2017	Cost
Old Bethpage Elementary	\$30,000
Parkway Elementary	\$65,000
Pasadena Elementary	\$ 0
Stratford Road Elementary (Fire doors)	<u>\$30,000</u>
Total Construction Costs	\$125,000



Potential Costs Associated with Relocating Kindergarten Classes to Their Home Schools

Kindergarten Appropriate Equipment	Cost
Playground Equipment:	
Old Bethpage Elementary	\$22,000
Parkway Elementary	\$22,000
Pasadena Elementary	\$22,000
Cafeteria Tables & Chairs:	
Parkway Elementary	\$5,800
Pasadena Elementary	<u>\$5,800</u>
Total Equipment Costs	\$77,600



Potential Costs Associated with Relocating Kindergarten Classes to Their Home Schools

Other Costs	Cost
Books and Materials for Libraries	\$5,000
Moving Costs for 3 Buildings	\$10,000
Total Additional Equipment, Construction and Miscellaneous Costs for 2016-2017	\$217,600



Construction of Additional Classrooms For Potential Student Population Growth	Cost
*2 Additional Classrooms Included in Bond -Pasadena	\$600,000
*2 Additional Classrooms in Future Budget -Parkway	\$600,000
Total Additional Classrooms	\$1,200,000
* These are the Superintendent's recommendation and will need BOE discussion and approval	



Will services change as a result of this transition to K-4 schools?

- **No, services will be provided at the level defined to meet student needs as they are now.**
- **Music and Art will have dedicated rooms in all buildings (See building plans).**
- **All services including OT/PT, Speech, AIS & ENL will have dedicated spaces.**
- **ASL and Foreign Language will have dedicated rooms in three schools. At Pasadena, for the 2016-17 school year only, this service will be in the children's classroom as the additional classrooms supported by the Bond are being recommended to be constructed.**



What will happen to the K-Center space?

- **The recommendation is to have some district offices moved into this space on the first floor. Under consideration are the following:**
 - **Athletics**
 - **Child Care**
 - **Private and Parochial textbooks**
 - **Transportation**
 - **Adult Education**
- **Technology and B & G would occupy the spaces at POBMS vacated by the offices.**
- **Stratford Road students will not have interactions with non-district personnel in their learning environment as measures would be taken to separate the spaces, similar to what now exists at Mattlin and Central Office.**
- **Staff development rooms would also be recommended as the Board Room is often overbooked.**



Transportation

- **Universal busing will continue for all K-8 students.**
- **K Students will ride the first three rows on the buses and will have the 14 monitors, currently available to them during the first weeks of school, rotate on all 40 runs to establish protocols early in the year.**
- **Each year transportation re-visits enrollment and ridership to determine transportation needs. There will be adequate room on each bus.**
- **K Students must be met at the bus stops by an adult. If an older sibling (Grade 3-4) is on the bus, permission must be granted, in writing to the transportation office prior to the opening of school, to allow the K Student off the bus with his/her sibling.**

Timeline

- **Staff will be surveyed to determine placement preference: September 2015**
- **Principals will meet to share data, discuss needs and placements: October/November 2015**
- **Principals will share information on staffing placements: December 2015**
- **Articulation meetings with K and Grade 1 teachers: January - March 2016**
- **Principal articulation meetings on integration logistics: January - April 2016**
- **Construction to prepare K Classes: Summer 2016**
- **Packing and moving of materials: June - August 2016**





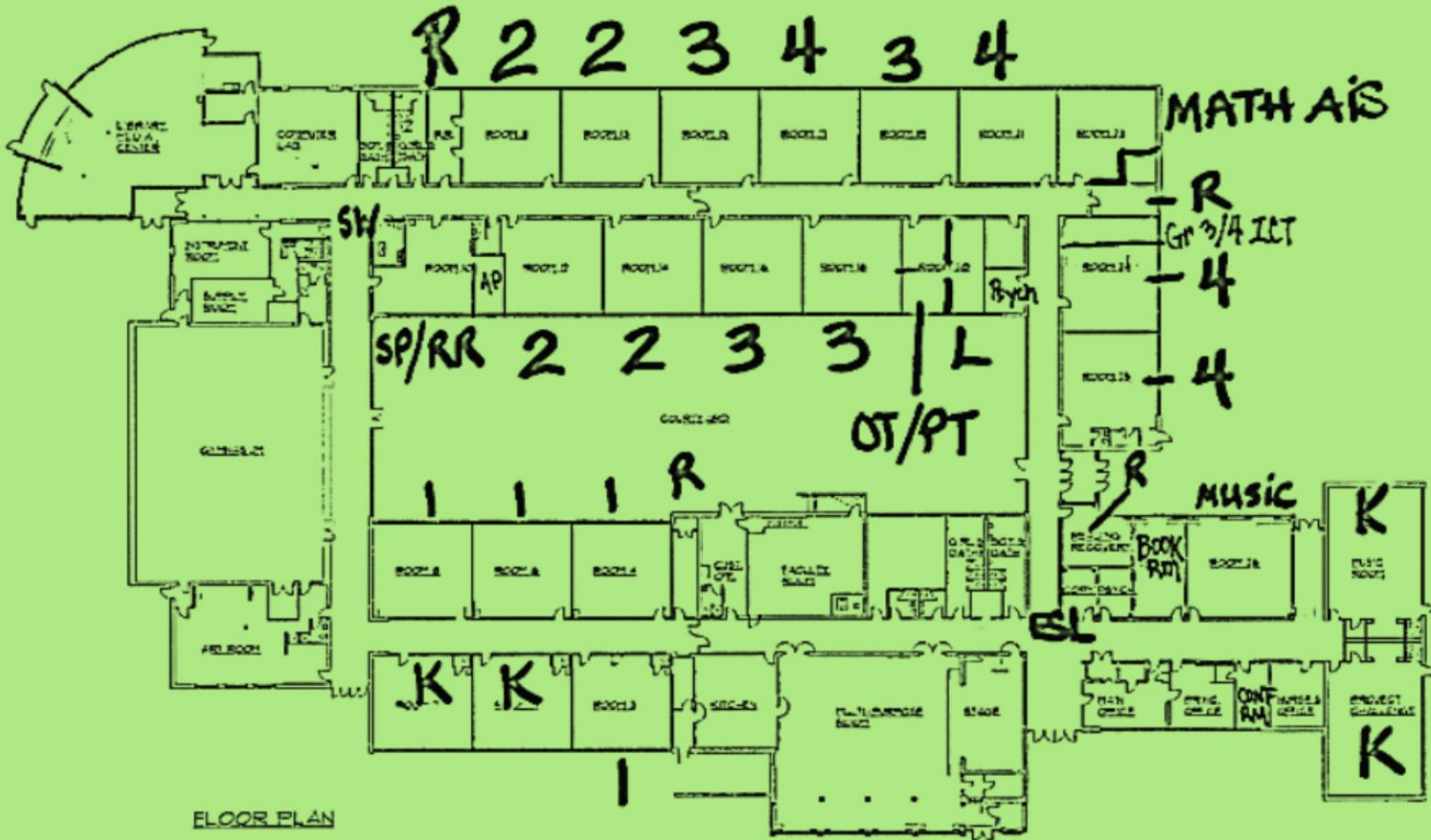
Elementary 2016-17 Building Plans



Plainview Old Bethpage CSD



OLD BETH page



FLOOR PLAN

R-Reading
L-Language

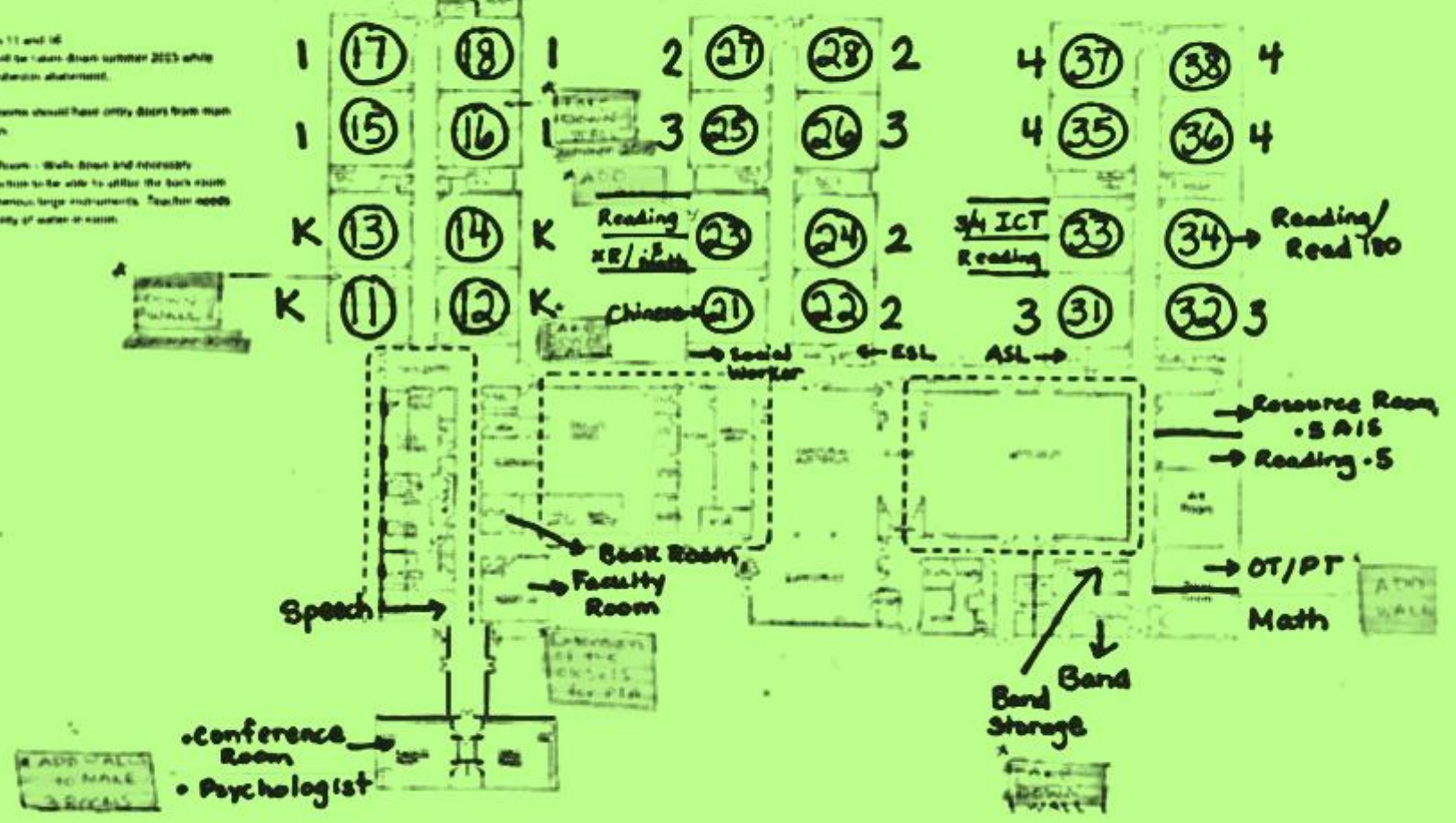
Parkway School Floor Plan

517115

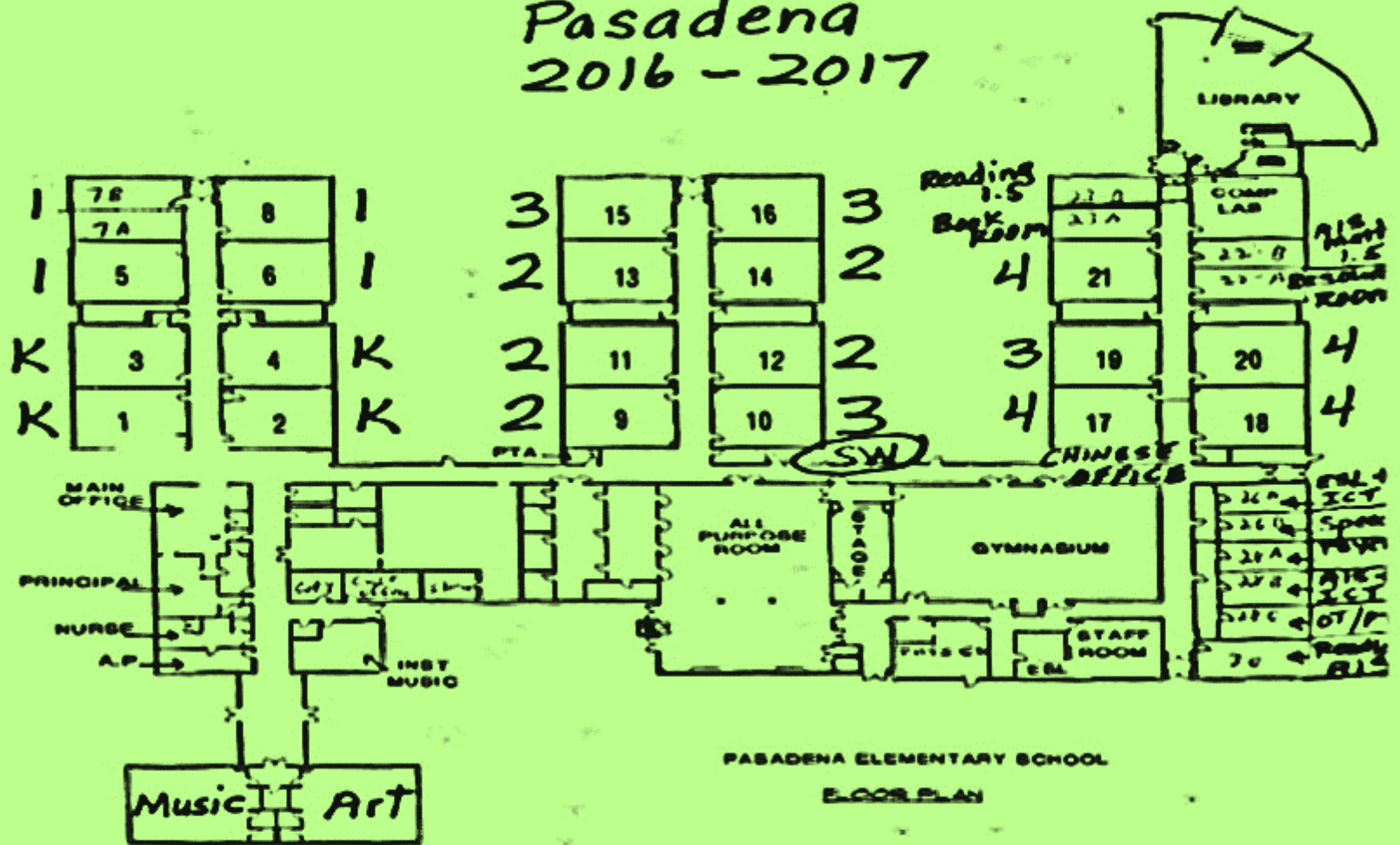
*Rooms 11 and 16
Walls will be taken down summer 2023 while
doing asbestos abatement.

*Light rooms should have entry doors from main
hallways.

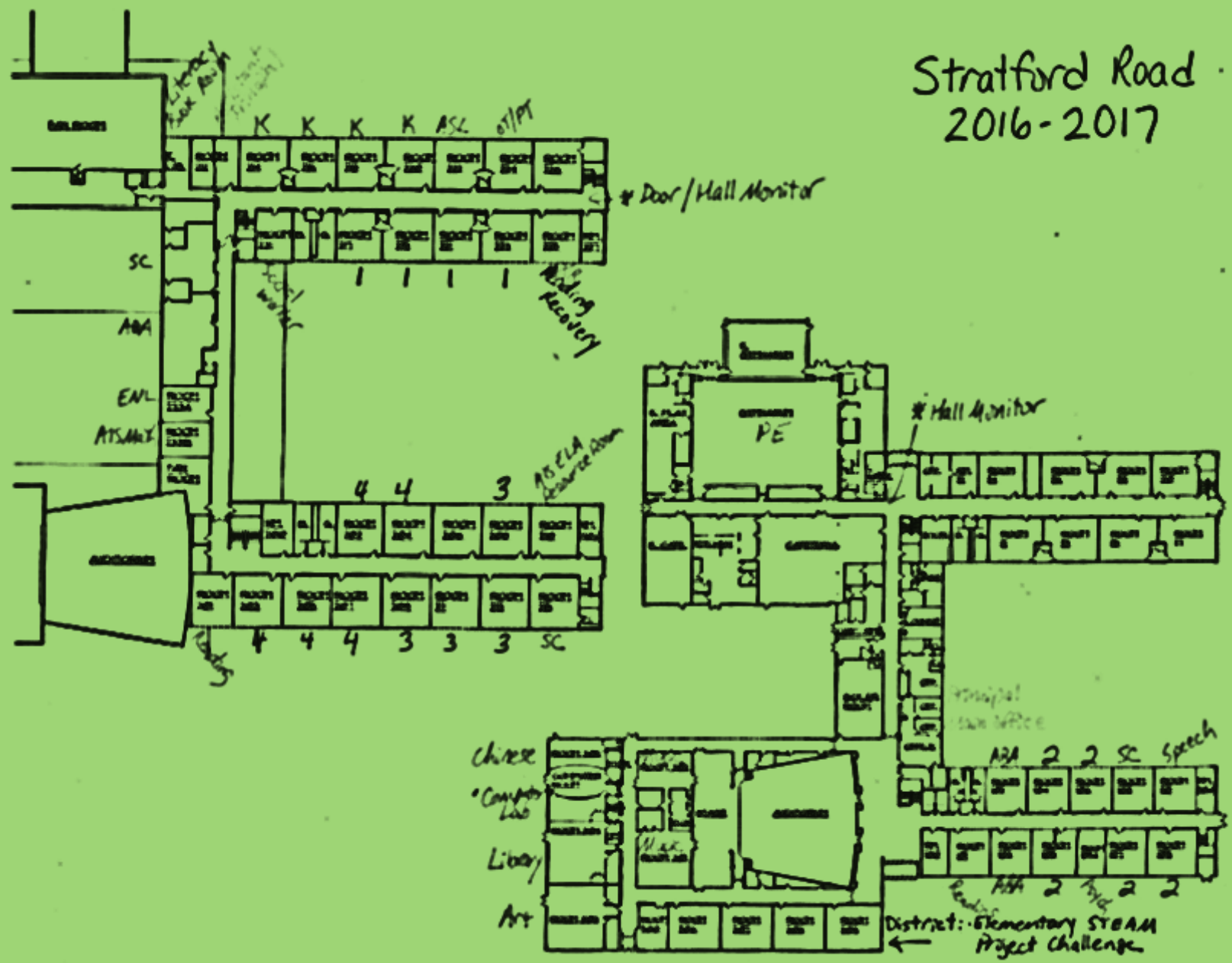
*Base Room - Walls down and necessary
construction to be able to utilize the back room
for numerous large instruments. Teacher needs
availability of water in room.



Pasadena 2016 - 2017



Stratford Road 2016-2017



Next Steps

- **Board of Education will come to resolution prior to the end of this school year.**
- **Remaining BOE meeting dates for 2015: May 27, June 8 and June 22**
 - **Building Plans will be available for viewing online as well as posted in each building.**

References

- **Burkam, David T., Michaels, Deborah L. & Lee, Valerie E., (2007) *School Grade Span and Kindergarten Learning. Elementary School Journal, 107(3), 287-303***
- **Epstein, J.L (1990). *What matters in middle grades-grade span or practices? Phi Delta Kappan, 71(6), 438-444***
- **Entwisle, D.R & Alexander, K.L. (1998) *Facilitating the transition to first grade: The nature of transition and research on factors affecting it. Elementary School Journal, 98(4),351-364***
- **Paglin, C & Fager, J, (1997) *Grade Configuration: Who goes Where? Portland OR: Northwest Regional Educational Laboratory, (ERIC Document Reproduction Service No. ED 432 033)***
- **Pianta, R.C., Cox, M.J., Taylor, L., & Early, D. (1999) *Kindergarten Teachers' practices related to transition to school: Results of a National Survey. Elementary School Journal, 100(1), 71-86***
- **Sink, C., Edwards, C.N., Weir Sarah, J. (2007) *Helping Students Transition from Kindergarten to First Grade Professional School Counseling, Vol.10 (3)***



Community Questions?



**POB Schools:
A Great Place To Live and Learn**

Thank You
